

# SURFACES WITH PRESCRIBED NODES AND MINIMUM ENERGY INTEGRAL OF FRACTIONAL ORDER

H. GUNAWAN, E. RUSYAMAN, AND L. AMBARWATI  
(BANDUNG)

ABSTRACT. This paper presents a method of constructing a continuous surface or a (real-valued) function of two variables  $z = u(x, y)$  defined on the square  $S := [0, 1]^2$ , which minimizes an energy integral of fractional order, subject to the condition  $u(0, y) = u(1, y) = u(x, 0) = u(x, 1) = 0$  and  $u(x_i, y_j) = c_{ij}$ , where  $0 < x_1 < \cdots < x_M < 1$ ,  $0 < y_1 < \cdots < y_N < 1$ , and  $c_{ij} \in \mathbb{R}$  are given. The function is expressed as a double Fourier sine series, and an iterative procedure to obtain the function will be presented.

## 1. INTRODUCTION

In [1], A.R. Alghofari studied the problem of finding a sufficiently smooth function on a square domain that minimizes an energy integral and assumes specified values on a rectangular grid inside the square. In particular, he discussed the existence and uniqueness of a solution to the problem, using tools in functional analysis and calculus of variations. The problem is related to the analysis of satellite data, which is important and useful from the application point of view.

In this paper, we shall discuss a method of constructing a continuous surface or a (real-valued) function of two variables  $z = u(x, y)$  defined on the square  $S := [0, 1]^2$ , which minimizes the energy integral

$$E_\beta(u) := \int_0^1 \int_0^1 |(-\Delta)^{\frac{\beta}{2}} u|^2 dx dy,$$

subject to the condition  $u(0, y) = u(1, y) = u(x, 0) = u(x, 1) = 0$  and  $u(x_i, y_j) = c_{ij}$ , where  $0 < x_1 < \cdots < x_M < 1$ ,  $0 < y_1 < \cdots < y_N < 1$ , and  $c_{ij} \in \mathbb{R}$  are given. Here  $-\Delta$  denotes the positive-definite Laplacian on  $\mathbb{R}^2$ , and  $(-\Delta)^{\frac{\beta}{2}}$  is its fractional power, where  $\beta \geq 0$  — which will be defined in the next section. For  $\beta = 2$ ,  $E_\beta(u)$  represents the (total) curvature or the strain energy on  $S$  (see [7]).

Using real and functional analysis arguments, we show that such a function exists and is unique if and only if  $\beta > 1$ . The function may be expressed as a double Fourier sine series. As in [6], we also provide an iterative procedure to obtain the function, and explain how it works through an example.

Related works may be found in [11, 12]. Applications of energy-minimizing surfaces may be found in [2, 4, 5] and the references therein.

---

2000 *Mathematics Subject Classification.* 41A50, 42A10, 42A15, 65T40, 74G65.

*Key words and phrases.* 2-D interpolation, Energy-minimizing surfaces.

## 2. THE EXISTENCE AND UNIQUENESS THEOREM

We shall here show that given  $M \times N$  points  $(x_i, y_j)$  with  $0 < x_1 < \cdots < x_M < 1$ ,  $0 < y_1 < \cdots < y_N < 1$ , and  $M \times N$  values  $c_{ij} \in \mathbb{R}$ , there exists a function  $z = u(x, y)$  such that (i)  $u(0, y) = u(1, y) = u(x, 0) = u(x, 1) = 0$ , (ii)  $u(x_i, y_j) = c_{ij}$  for  $i = 1, \dots, M$ ,  $j = 1, \dots, N$ , and (iii) the energy integral  $E_\beta(u)$  is minimum. The continuity of the function will depend on the value of  $\beta$ , which we shall see later.

As we are working on a (bounded) square domain, we may represent a function  $u$  on  $S = [0, 1]^2$  as a double Fourier sine series

$$u(x, y) = \sum_{m,n=1}^{\infty} a_{mn} \sin m\pi x. \sin n\pi y.$$

Note that the condition  $u(0, y) = u(1, y) = u(x, 0) = u(x, 1) = 0$  is satisfied, and so we only have to take care of the other two conditions.

The fractional power of  $-\Delta$  is defined as follows. Computing  $-\Delta u = -\frac{\partial^2 u}{\partial x^2} - \frac{\partial^2 u}{\partial y^2}$ , we obtain

$$-\Delta u(x, y) = \pi^2 \sum_{m,n=1}^{\infty} (m^2 + n^2) a_{mn} \sin m\pi x. \sin n\pi y.$$

As in [10], for  $\beta \geq 0$ , we define the fractional power  $(-\Delta)^{\frac{\beta}{2}}$  by the formula

$$(-\Delta)^{\frac{\beta}{2}} u(x, y) := \pi^\beta \sum_{m,n=1}^{\infty} (m^2 + n^2)^{\frac{\beta}{2}} a_{mn} \sin m\pi x. \sin n\pi y$$

Thus, if  $u$  is identified by the array of its coefficients  $[a_{mn}]$ , then  $(-\Delta)^{\frac{\beta}{2}} u$  is identified by the array  $[\pi^\beta (m^2 + n^2)^{\frac{\beta}{2}} a_{mn}]$ . One may observe that the formula matches the computation of the nonnegative integral power of  $-\Delta$ , that is, when  $\beta = 2k$ ,  $k = 0, 1, 2, \dots$  [Note also that  $(-\Delta)^{\frac{\beta}{2}} (-\Delta)^{\frac{\gamma}{2}} = (-\Delta)^{\frac{\beta+\gamma}{2}}$  for every  $\beta, \gamma \geq 0$ .]

With the above definition of  $(-\Delta)^{\frac{\beta}{2}}$ , the energy integral  $E_\beta(u)$  may now be given by the sum

$$E_\beta(u) = \frac{\pi^{2\beta}}{4} \sum_{m,n=1}^{\infty} a_{mn}^2 (m^2 + n^2)^\beta.$$

Since  $u$  is identified by  $[a_{mn}]$ , the problem is to determine the values of  $a_{mn}$ 's such that the prescribed values  $c_{ij}$  are assumed at  $(x_i, y_j)$  and the latest sum is minimized.

To solve the problem, let  $W = W_\beta$  be the space of all functions  $u$  of the form  $u(x, y) = \sum_{m,n=1}^{\infty} a_{mn} \sin m\pi x \sin n\pi y$  for which  $\sum_{m,n=1}^{\infty} a_{mn}^2 (m^2 + n^2)^\beta < \infty$ . On  $W$ , we define the inner product  $\langle \cdot, \cdot \rangle$  by

$$\langle u, v \rangle := \sum_{m,n=1}^{\infty} a_{mn} b_{mn} (m^2 + n^2)^\beta,$$

where  $a_{mn}$ 's and  $b_{mn}$ 's are the coefficients of  $u$  and  $v$  respectively. Its induced norm is

$$\|u\| := \left[ \sum_{m,n=1}^{\infty} a_{mn}^2 (m^2 + n^2)^\beta \right]^{\frac{1}{2}}.$$

Then we have the following fact, whose proof is routine, and so we leave it to the reader.

**Fact 2.1**  $(W, \langle \cdot, \cdot \rangle)$  is a Hilbert space.

For  $\beta > 1$ , we have the following result.

**Theorem 2.2** Let  $\beta > 1$ . If  $(u_k)$  converges to  $u$  in norm, then  $(-\Delta)^{\frac{\alpha}{2}} u_k$  converges to  $(-\Delta)^{\frac{\alpha}{2}} u$  uniformly, whenever  $0 \leq \alpha < \beta - 1$ . In particular, if  $(u_k)$  converges to  $u$  in norm, then  $(u_k)$  converges to  $u$  uniformly.

*Proof.* Let  $a_{mn}^{(k)}$ 's and  $a_{mn}$ 's be the coefficients of  $u_k$  and  $u$  respectively, and  $0 \leq \alpha < \beta - 1$ . Then, for every  $(x, y) \in S$ , we have

$$\begin{aligned} & |(-\Delta)^{\frac{\alpha}{2}} u_k(x, y) - (-\Delta)^{\frac{\alpha}{2}} u(x, y)| \\ &= \pi^\alpha \left| \sum_{m,n=1}^{\infty} (m^2 + n^2)^{\frac{\alpha}{2}} (a_{mn}^{(k)} - a_{mn}) \sin m\pi x \sin n\pi y \right| \\ &\leq \pi^\alpha \left[ \sum_{m,n=1}^{\infty} (m^2 + n^2)^\beta (a_{mn}^{(k)} - a_{mn})^2 \right]^{\frac{1}{2}} \left[ \sum_{m,n=1}^{\infty} \frac{\sin^2 m\pi x \sin^2 n\pi y}{(m^2 + n^2)^{\beta - \alpha}} \right]^{\frac{1}{2}}. \end{aligned}$$

Let us now have a closer look at the last expression on the right hand side. The first sum is nothing but  $\|u_k - u\|^2$ . The second sum is dominated by  $\sum_{m,n=1}^{\infty} \frac{1}{(m^2 + n^2)^{\beta - \alpha}}$ . Since  $\beta - \alpha > 1$ , this sum is convergent (by the integral test). Hence, we find that

$$|(-\Delta)^{\frac{\alpha}{2}} u_k(x, y) - (-\Delta)^{\frac{\alpha}{2}} u(x, y)| \leq C \|u_k - u\|,$$

where  $C$  is independent of  $(x, y)$ . This shows that  $(-\Delta)^{\frac{\alpha}{2}} u_k$  converges to  $(-\Delta)^{\frac{\alpha}{2}} u$  uniformly, as desired.  $\square$

**Corollary 2.3** Let  $\beta > 1$ . Then, every function  $u \in W$  is continuous on  $S$ .

*Proof.* If  $u \in W$ , then  $u$  is a limit (in norm), and hence a uniform limit, of the partial sums  $u_k := \sum_{m=1}^k \sum_{n=1}^k a_{mn} \sin m\pi x \sin n\pi y$ . Since the partial sums are continuous on  $S$ , then  $u$  too must be continuous on  $S$ .  $\square$

To prove the existence and uniqueness of the solution to our problem, we define

$$U := \{u \in W : u(x_i, y_j) = c_{ij}, i = 1, \dots, M, j = 1, \dots, N\}$$

and

$$V := \{u \in W : u(x_i, y_j) = 0, i = 1, \dots, M, j = 1, \dots, N\}.$$

Then, as in [1], we have the following fact.

**Fact 2.4**  $U$  is a non-empty, closed, and convex subset, while  $V$  is a closed subspace of  $W$ .

*Proof.* We shall only prove that  $U$  is non-empty, and leave the others to the reader. Consider the system of linear equations

$$\sum_{m=1}^M \sum_{n=1}^N a_{mn} \sin m\pi x \sin n\pi y = c_{ij}, \quad i = 1, \dots, M, \quad j = 1, \dots, N.$$

The system will have a solution if the matrix

$$A := \begin{bmatrix} \sin \pi y_1 [\sin m\pi x_i] & \sin 2\pi y_1 [\sin m\pi x_i] & \cdots & \sin N\pi y_1 [\sin m\pi x_i] \\ \sin \pi y_1 [\sin m\pi x_i] & \sin 2\pi y_1 [\sin m\pi x_i] & \cdots & \sin N\pi y_2 [\sin m\pi x_i] \\ \vdots & \vdots & \ddots & \vdots \\ \sin \pi y_N [\sin m\pi x_i] & \sin 2\pi y_N [\sin m\pi x_i] & \cdots & \sin N\pi y_N [\sin m\pi x_i] \end{bmatrix},$$

is non-singular. The matrix  $A$  is the Kronecker product of the  $n \times n$  matrix  $[\sin n\pi y_j] := [\sin n\pi y_j]_{j,n}$  and the  $m \times m$  matrix  $[\sin m\pi x_i] := [\sin m\pi x_i]_{i,m}$ . Hence, we obtain

$$\det A = (\det[\sin n\pi y_j])^m \cdot (\det[\sin m\pi x_i])^n$$

(see [9]). Since  $[\sin n\pi y_j]$  and  $[\sin m\pi x_i]$  are both non-singular (see, e.g., [8]), we conclude that the matrix  $A$  is non-singular too. Therefore the above system of equations has a solution, which means that  $U$  is non-empty.  $\square$

The existence and uniqueness of the solution to our problem follows from the best approximation theory in Hilbert spaces.

**Theorem 2.5** *The problem has a unique solution in  $W$ , and the solution is given by*

$$u := u_0 - \text{proj}_V(u_0)$$

where  $u_0$  is an arbitrary element of  $U$  and  $\text{proj}_V(u_0)$  is the orthogonal projection of  $u_0$  on  $V$ . For  $\beta > 1$ , the function  $u$  is continuous on  $S$ .

*Proof.* Take an element  $u_0$  in  $U$ . Then, for any  $v \in V$ ,  $u_0 - v$  is also in  $U$ . Since  $U$  is a convex subset of  $W$ , there must exist a unique element  $v_0 \in V$  such that  $\|u_0 - v_0\|$  is minimum [3]. Thus  $u := u_0 - v_0$  is the unique solution in  $W$  for our minimization problem. By the best approximation theory in Hilbert spaces, the element  $v_0 \in V$  that minimizes  $\|u_0 - v_0\|$  must be the orthogonal projection of  $u_0$  on  $V$ , that is,  $v_0 = \text{proj}_V(u_0)$ . For  $\beta > 1$ , the continuity of  $u$  follows from Corollary 2.3.  $\square$

In the next section, we shall discuss how we actually find the solution to our problem.

## 3. THE PROCEDURE TO FIND THE SOLUTION

To find an element  $u_0$  in  $U$  is easy, we only need to solve the system of linear equations

$$\sum_{m=1}^M \sum_{n=1}^N a_{mn} \sin m\pi x \sin n\pi y = c_{ij}, \quad i = 1, \dots, M, \quad j = 1, \dots, N.$$

Here  $u_0$  can be thought of as an initial approximation to the solution we are looking for. Once we have  $u_0$ , we just have to compute its orthogonal projection on the subspace  $V$ .

To do so, we first determine an orthogonal basis of  $V$ . We note that every element of  $V$  must satisfy

$$\sum_{m=1}^M \sum_{n=1}^N a_{mn} \sin m\pi x_i \sin n\pi y_j = - \sum_{m,n} a_{mn} \sin m\pi x_i \sin n\pi y_j,$$

for  $i = 1, \dots, M$ ,  $j = 1, \dots, N$ , where the sum on the right hand side is taken over  $m$  and  $n$  with “ $m \geq M + 1$  or  $n \geq N + 1$ ”. From this, we may basically express  $a_{mn}$  for  $m = 1, \dots, M$ ,  $n = 1, \dots, N$  in terms of  $a_{mn}$  with  $m \geq M + 1$  or  $n \geq N + 1$ . Thus, every element of  $V$  may be written as

$$v = \sum_{m,n} a_{mn} v_{mn},$$

for some elements  $v_{mn}$  in  $V$ . [For  $\beta > 1$ , one may check that the subspace  $V$  has co-dimension  $M \times N$ .]

For example, for  $m = 1$ ,  $n = N + 1$ , the element  $v_{1,N+1}$  is identified by the array

$$\begin{bmatrix} * & \cdots & * & 1 & \cdots \\ \vdots & \ddots & \vdots & 0 & \cdots \\ * & \cdots & * & 0 & \cdots \\ 0 & \cdots & 0 & 0 & \cdots \\ \vdots & \cdots & \vdots & \vdots & \ddots \end{bmatrix},$$

where the entries marked by an asterisk comes from  $a_{mn}$ ,  $m = 1, \dots, M$ ,  $n = 1, \dots, N$ , and all others are 0 except for the entry in Row 1, Column  $N + 1$  — which is equal to 1. See [6] for similar ideas in the one dimensional case.

From the  $v_{mn}$ 's, we can get an orthogonal basis for  $V$ , call it  $\{v_{mn}^*\}$ . We can then compute the orthogonal projection of our initial approximation  $u_0$  on  $V$  iteratively, by projecting it on the  $v_{mn}^*$ 's, by which we reduce the energy until the reduction is no longer significant.

We shall now give an example to explain how the procedure really works. Suppose we wish to find the function  $u$  such that  $u(0.5, 0.5) = 1$  and the energy  $E_{1.5}(u)$  is minimized. [In this example,  $M = N = 1$ ,  $x_1 = y_1 = 0.5$ , and  $c_{11} = 1$ ; while  $\beta = 1.5$ .]

Our initial approximation is  $u_0(x, y) = \sin \pi x \sin \pi y$ , which is identified by the array

$$\begin{bmatrix} 1 & 0 & 0 & \cdots \\ 0 & 0 & 0 & \cdots \\ 0 & 0 & 0 & \cdots \\ \vdots & \vdots & \vdots & \ddots \end{bmatrix}.$$

Next, to find the basis of  $V$ , we note that if  $v := [a_{mn}]$  is an element of  $V$ , then we have

$$\sum_{m,n=1}^{\infty} a_{mn} \sin 0.5m\pi \sin 0.5n\pi = 0.$$

In other words, the sum of the entries of the array

$$\begin{bmatrix} a_{11} & 0 & -a_{13} & 0 & a_{15} & \cdots \\ 0 & 0 & 0 & 0 & 0 & \cdots \\ -a_{31} & 0 & a_{33} & 0 & -a_{35} & \cdots \\ 0 & 0 & 0 & 0 & 0 & \cdots \\ a_{51} & 0 & -a_{53} & 0 & a_{55} & \cdots \\ \vdots & \vdots & \vdots & \vdots & \vdots & \ddots \end{bmatrix}$$

is equal to zero. Hence  $a_{11}$  may be expressed as the sum of the entries of the array

$$\begin{bmatrix} 0 & 0 & a_{13} & 0 & -a_{15} & \cdots \\ 0 & 0 & 0 & 0 & 0 & \cdots \\ a_{31} & 0 & -a_{33} & 0 & a_{35} & \cdots \\ 0 & 0 & 0 & 0 & 0 & \cdots \\ -a_{51} & 0 & a_{53} & 0 & -a_{55} & \cdots \\ \vdots & \vdots & \vdots & \vdots & \vdots & \ddots \end{bmatrix}$$

Therefore,  $v$  may be written as

$$\begin{aligned} \begin{bmatrix} a_{11} & a_{12} & a_{13} & \cdots \\ a_{21} & a_{22} & a_{23} & \cdots \\ a_{31} & a_{32} & a_{33} & \cdots \\ \vdots & \vdots & \vdots & \ddots \end{bmatrix} &= a_{12} \begin{bmatrix} 0 & 1 & 0 & \cdots \\ 0 & 0 & 0 & \cdots \\ 0 & 0 & 0 & \cdots \\ \vdots & \vdots & \vdots & \ddots \end{bmatrix} + a_{22} \begin{bmatrix} 0 & 0 & 0 & \cdots \\ 0 & 1 & 0 & \cdots \\ 0 & 0 & 0 & \cdots \\ \vdots & \vdots & \vdots & \ddots \end{bmatrix} \\ &+ a_{21} \begin{bmatrix} 0 & 0 & 0 & \cdots \\ 1 & 0 & 0 & \cdots \\ 0 & 0 & 0 & \cdots \\ \vdots & \vdots & \vdots & \ddots \end{bmatrix} + a_{13} \begin{bmatrix} 1 & 0 & 1 & \cdots \\ 0 & 0 & 0 & \cdots \\ 0 & 0 & 0 & \cdots \\ \vdots & \vdots & \vdots & \ddots \end{bmatrix} \\ &+ a_{23} \begin{bmatrix} 0 & 0 & 0 & \cdots \\ 0 & 0 & 1 & \cdots \\ 0 & 0 & 0 & \cdots \\ \vdots & \vdots & \vdots & \ddots \end{bmatrix} + a_{33} \begin{bmatrix} -1 & 0 & 0 & \cdots \\ 0 & 0 & 0 & \cdots \\ 0 & 0 & 1 & \cdots \\ \vdots & \vdots & \vdots & \ddots \end{bmatrix} + \cdots \\ &= a_{12}v_{12} + a_{22}v_{22} + a_{21}v_{21} + a_{13}v_{13} + a_{23}v_{23} + a_{33}v_{33} + \cdots. \end{aligned}$$

In this case, the set  $\{v_{12}, v_{22}, v_{21}, v_{13}, v_{23}, v_{33}, \dots\}$  forms a basis for  $V$ . Note that each element of this basis has zero entries except for finitely many entries. This feature is one among others that makes the computation handy.

Starting from the initial approximation  $u_0$ , we compute the next approximations  $u_1 = u_0 - \text{proj}_{v_{12}^*}(u_0)$ ,  $u_2 = u_1 - \text{proj}_{v_{22}^*}(u_0)$ ,  $u_3 = u_2 - \text{proj}_{v_{21}^*}(u_0)$ , and so on, where  $\{v_{mn}^*\}$  is an orthogonal basis obtained from  $\{v_{mn}\}$ . Associated to each approximation, we compute the energy  $E_{1.5}(u_n)$ , which is a multiple of  $\|u_n\|^2$ . As  $n$  grows, the energy decreases, and we stop the iteration when the decrease is less than a threshold. Here is the picture of the surface, within a threshold of  $10^{-4}$ .

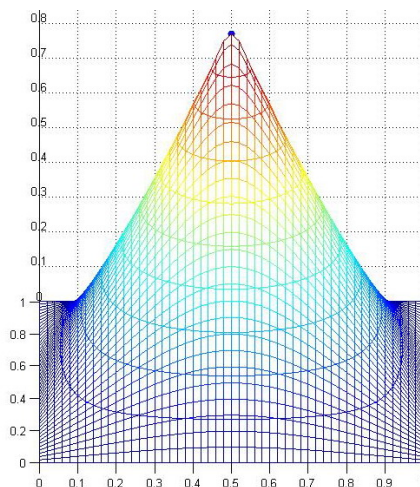


Figure 1. The surface passing through  $(0.5, 0.5, 1)$  with minimum  $E_{1.5}(u)$

The following pictures are obtained for different order  $\beta$  and/or different points  $(x_i, y_j, c_{ij})$ .

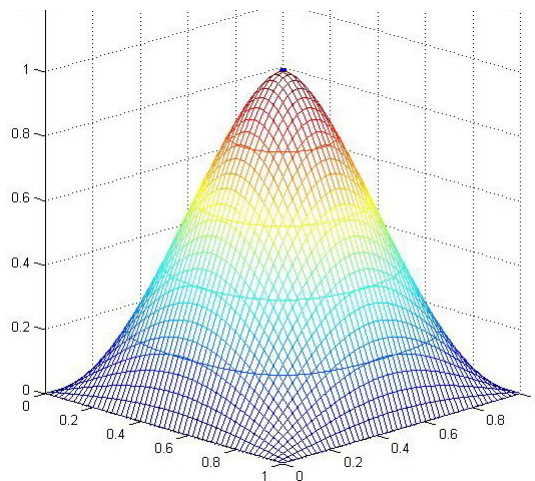


Figure 2. The surface passing through  $(0.5, 0.5, 1)$  with minimum curvature

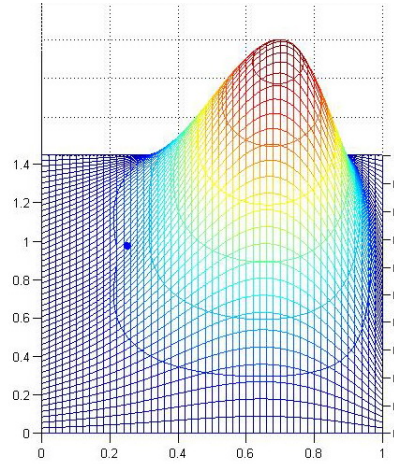


Figure 3. The surface passing through  $(0.5, 0.25, 0.25)$  and  $(0.5, 0.75, 1.25)$  with minimum curvature

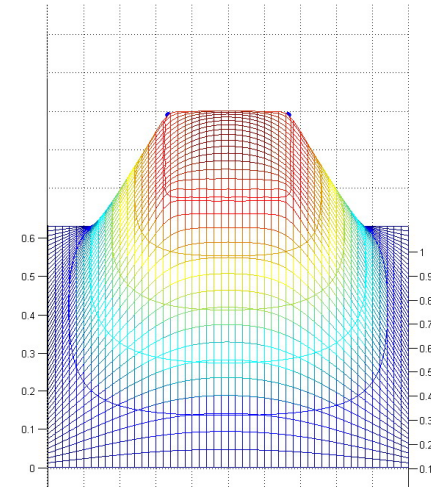


Figure 4. A surface passing through four prescribed points with minimum  $E_{1.5}(u)$

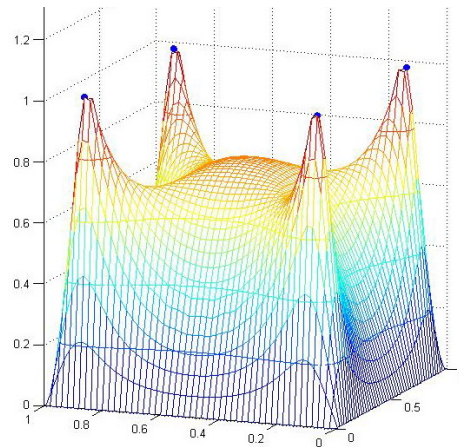


Figure 5. Another surface passing through four prescribed points with minimum  $E_{1.5}(u)$



4. THE CASE  $0 \leq \beta \leq 1$ 

Suppose that  $0 \leq \beta \leq 1$  and we are trying to find a function  $u$  on  $S$  that minimizes the energy  $E_\beta(u)$  and satisfies  $u(0.5, 0.5) = 1$ . The existence and uniqueness of such a function is guaranteed by Theorem 2.5, but as we shall see now the continuity is lost.

Recall that if  $v := [a_{mn}]$  is an element of  $V$ , then

$$\sum_{m,n=1}^{\infty} a_{mn} \sin 0.5m\pi \sin 0.5n\pi = 0.$$

This implies that the only element that is orthogonal to  $V$  is  $u := \left[ \frac{\sin 0.5m\pi \sin 0.5n\pi}{(m^2+n^2)^\beta} \right]$  or its multiples. But then we have

$$\begin{aligned} \|u\|^2 &= 2^\beta \left( 1 + \frac{2}{5^\beta} + \frac{1}{9^\beta} + \frac{2}{13^\beta} + \frac{2}{17^\beta} + \frac{1}{25^\beta} + \dots \right) \\ &> 2^\beta \left( 1 + 3 \cdot \frac{1}{9^\beta} + 5 \cdot \frac{1}{25^\beta} + \dots \right) \\ &= \infty. \end{aligned}$$

Thus  $V^\perp = \{0\}$  or  $V = W$ , the whole space. This tells us that, starting from any initial approximation  $u_0$ , we will end up with  $u = u_0 - \text{proj}_V(u_0) = 0$ , that is,  $u(x, y) = 0$  almost everywhere on  $S$ . Since we wish to keep the value 1 at  $(0.5, 0.5)$ , the function  $u$  cannot be continuous on  $S$ . For instance, if we start from  $u_0(x, y) = \sin \pi x \sin \pi y$ , then we will end up with

$$u(x, y) = \begin{cases} 1, & (x, y) = (0.5, 0.5), \\ 0, & \text{otherwise.} \end{cases}$$

This result is actually predictable in the case  $\beta = 0$ , that is, when we minimize the volume under the surface  $z = u(x, y)$ , subject to the condition  $u(0, y) = u(1, y) = u(x, 0) = u(x, 1) = 0$  and  $u(0.5, 0.5) = 1$ .

To sum up, to have a continuous solution to our minimization problem, the condition  $\beta > 1$  is not only sufficient but also necessary.

**Acknowledgement.** H. Gunawan and L. Ambarwati are supported by ITB Research Grant No. 252/2009. The pictures are produced by using Matlab; we thank I. Sofyan and F. Pranolo for having translated our ideas into the codes.

## REFERENCES

- [1] A.R. Alghofari, *Problems in Analysis Related to Satellites*, Ph.D. Thesis, The University of New South Wales, Sydney, 2005.
- [2] R. Ardon, L.D. Cohen and A. Yezzi, “Fast surface segmentation guided by user input using implicit extension of minimal paths”, *J. Math. Imaging Vision* **25** (2006), 289–305.
- [3] K. Atkinson and W. Han, *Theoretical Numerical Analysis: A Functional Analysis Framework*, Springer-Verlag, New York, 2001.
- [4] F. Benmansour and L.D. Cohen, “Fast object segmentation by growing minimal paths from a single point on 2D or 3D images”, *J. Math. Imaging Vision* **33** (2009), 209–221.
- [5] R. Capovilla and J. Guven, “Stresses in lipid membranes”, [arXiv: cond-mat/0203148v3](https://arxiv.org/abs/cond-mat/0203148v3) (2002)

- [6] H. Gunawan, F. Pranolo and E. Rusyaman, “An interpolation method that minimizes an energy integral of fractional order”, *Proceedings of Asian Symposium on Computer Mathematics 2007* (published by Springer-Verlag in 2008).
- [7] H.L. Langhaar, *Energy Methods in Applied Mechanics* (John Wiley & Sons, New York, 1962).
- [8] G.G. Lorentz, *Approximation of Functions*, AMS Chelsea Publishing, Providence, 1966.
- [9] C.R. Rao and M.B. Rao, *Matrix Algebra and Its Applications to Statistics and Econometric*, World Scientific, Singapore, 1998.
- [10] E.M. Stein, *Singular Integrals and Differentiability Properties of Functions*, Princeton University Press, Princeton, 1971.
- [11] J. Wallner, “Existence of set-interpolating and energy-minimizing curves”, *Comput. Aided Geom. Design* **21** (2004), 883–892.
- [12] W.L. Wan, T.F. Chan and B. Smith, “An energy-minimizing interpolation for robust multigrid methods”, *SIAM J. Sci. Comput.* **21** (1999/00), 1632–1649.

H. GUNAWAN: Analysis and Geometry Group, Faculty of Mathematics and Natural Sciences, Bandung Institute of Technology, Bandung, Indonesia.

E-mail: hgunawan@math.itb.ac.id

E. RUSYAMAN: Department of Mathematics, Padjadjaran University, Bandung, Indonesia.

E-mail: rusyaman@plasa.com

L. AMBARWATI: Analysis and Geometry Group, Faculty of Mathematics and Natural Sciences, Bandung Institute of Technology, Bandung, Indonesia.

E-mail: lukita\_72@yahoo.com